

CONSERVATION MEASURE 42-01 (2005)
Limits on the fishery for *Champocephalus gunnari*
in Statistical Subarea 48.3 in the 2005/06 season

Species	icefish
Area	48.3
Season	2005/06
Gear	trawl

The Commission hereby adopts the following conservation measure in accordance with Conservation Measure 31-01:

- | | |
|-------------|--|
| Access | <ol style="list-style-type: none"> 1. The fishery for <i>Champocephalus gunnari</i> in Statistical Subarea 48.3 shall be conducted by vessels using trawls only. The use of bottom trawls in the directed fishery for <i>Champocephalus gunnari</i> in Statistical Subarea 48.3 is prohibited. 2. Fishing for <i>Champocephalus gunnari</i> shall be prohibited within 12 n miles of the coast of South Georgia during the period 1 March to 31 May (spawning period). |
| Catch limit | <ol style="list-style-type: none"> 3. The total catch of <i>Champocephalus gunnari</i> in Statistical Subarea 48.3 in the 2005/06 season shall be limited to 2 244 tonnes. Any catch taken between 1 October and 14 November 2005 shall be counted against the catch limit for the 2005/06 fishing season. The total catch of <i>Champocephalus gunnari</i> taken in the period 1 March to 31 May shall be limited to 561 tonnes. 4. Where any haul contains more than 100 kg of <i>Champocephalus gunnari</i>, and more than 10% of the <i>Champocephalus gunnari</i> by number are smaller than 240 mm total length, the fishing vessel shall move to another fishing location at least 5 n miles distant¹. The fishing vessel shall not return to any point within 5 n miles of the location where the catch of small <i>Champocephalus gunnari</i> exceeded 10%, for a period of at least five days². The location where the catch of small <i>Champocephalus gunnari</i> exceeded 10% is defined as the path followed by the fishing vessel from the point at which the fishing gear was first deployed from the fishing vessel to the point at which the fishing gear was retrieved by the fishing vessel. |
| Season | <ol style="list-style-type: none"> 5. For the purpose of the trawl fishery for <i>Champocephalus gunnari</i> in Statistical Subarea 48.3, the 2005/06 season is defined as the period from 15 November 2005 to 14 November 2006, or until the catch limit is reached, whichever is sooner. |
| By-catch | <ol style="list-style-type: none"> 6. The by-catch in this fishery shall be regulated as set out in Conservation Measure 33-01. If, in the course of the directed fishery for <i>Champocephalus gunnari</i>, the by-catch in any one haul of any of the species named in Conservation Measure 33-01 <ul style="list-style-type: none"> • is greater than 100 kg and exceeds 5% of the total catch of all fish by weight, or • is equal to or greater than 2 tonnes, then |

the fishing vessel shall move to another location at least 5 n miles distant¹. The fishing vessel shall not return to any point within 5 n miles of the location where the by-catch of species named in Conservation Measure 33-01 exceeded 5% for a period of at least five days². The location where the by-catch exceeded 5% is defined as the path followed by the fishing vessel from the point at which the fishing gear was first deployed from the fishing vessel to the point at which the fishing gear was retrieved by the fishing vessel.

- Mitigation 7. The operation of this fishery shall be carried out in accordance with Conservation Measure 25-03 so as to minimise the incidental mortality of seabirds in the course of the fishery.
8. Should any vessel catch a total of 20 seabirds, it shall cease fishing and shall be excluded from further participation in the fishery in the 2005/06 season.
- Observers 9. Each vessel participating in this fishery shall have at least one scientific observer appointed in accordance with the CCAMLR Scheme of International Scientific Observation, and where possible one additional scientific observer, on board throughout all fishing activities within the fishing period.
- Data: catch/effort 10. For the purpose of implementing this conservation measure in the 2005/06 season, the following shall apply:
- (i) the Five-day Catch and Effort Reporting System set out in Conservation Measure 23-01;
 - (ii) the Monthly Fine-scale Catch and Effort Reporting System set out in Conservation Measure 23-04. Fine-scale data shall be submitted on a haul-by-haul basis.
11. For the purpose of Conservation Measures 23-01 and 23-04, the target species is *Champscephalus gunnari* and by-catch species are defined as any species other than *Champscephalus gunnari*.
- Data: biological 12. Fine-scale biological data, as required under Conservation Measure 23-05, shall be collected and recorded. Such data shall be reported in accordance with the CCAMLR Scheme of International Scientific Observation.

Research 13. Each vessel operating in this fishery during the period 1 March to 31 May 2006 shall conduct twenty (20) research trawls in the manner described in Annex 42-01/A.

¹ This provision concerning the minimum distance separating fishing locations is adopted pending the adoption of a more appropriate definition of a fishing location by the Commission.

² The specified period is adopted in accordance with the reporting period specified in Conservation Measure 23-01, pending the adoption of a more appropriate period by the Commission.

ANNEX 42-01/A

RESEARCH TRAWLS DURING SPAWNING SEASON

1. All fishing vessels taking part in the fishery for *Champtocephalus gunnari* in Statistical Subarea 48.3 between 1 March and 31 May shall be required to conduct a minimum of 20 research hauls, to be completed during that period. Twelve research hauls shall be carried out in the Shag Rocks–Black Rocks area. These shall be distributed between the four sectors illustrated in Figure 1: four each in the NW and SE sectors, and two each in the NE and SW sectors. A further eight research hauls shall be conducted on the northwestern shelf of South Georgia over water less than 300 m deep, as illustrated in Figure 1.
2. Each research haul must be at least 5 n miles distant from all others. The spacing of stations is intended to be such that both areas are adequately covered in order to provide information on the length, sex, maturity and weight composition of *Champtocephalus gunnari*.
3. If concentrations of fish are located en route to South Georgia, they should be fished in addition to the research hauls.
4. The duration of research hauls must be of a minimum of 30 minutes with the net at fishing depth. During the day, the net must be fished close to the bottom.
5. The catch of all research hauls shall be sampled by the international scientific observer on board. Samples should aim to comprise at least 100 fish, sampled using standard random sampling techniques. All fish in the sample should be at least examined for length, sex and maturity determination, and where possible weight. More fish should be examined if the catch is large and time permits.

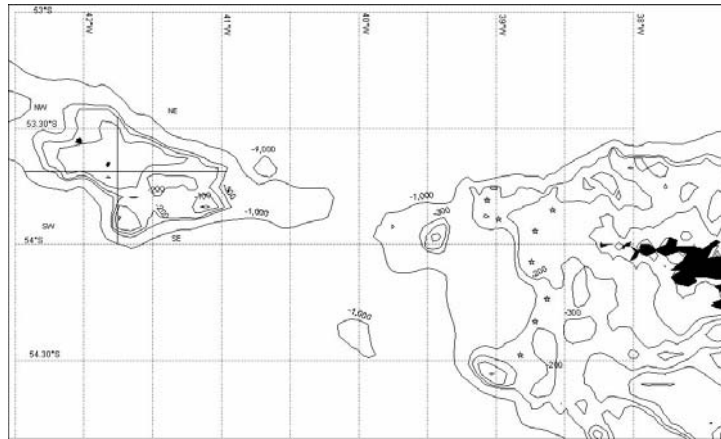


Figure 1: Distribution of 20 research hauls on *Champsocephalus gunnari* at Shag Rocks (12) and South Georgia (8) from 1 March to 31 May. Haul locations around South Georgia (stars) are illustrative.