

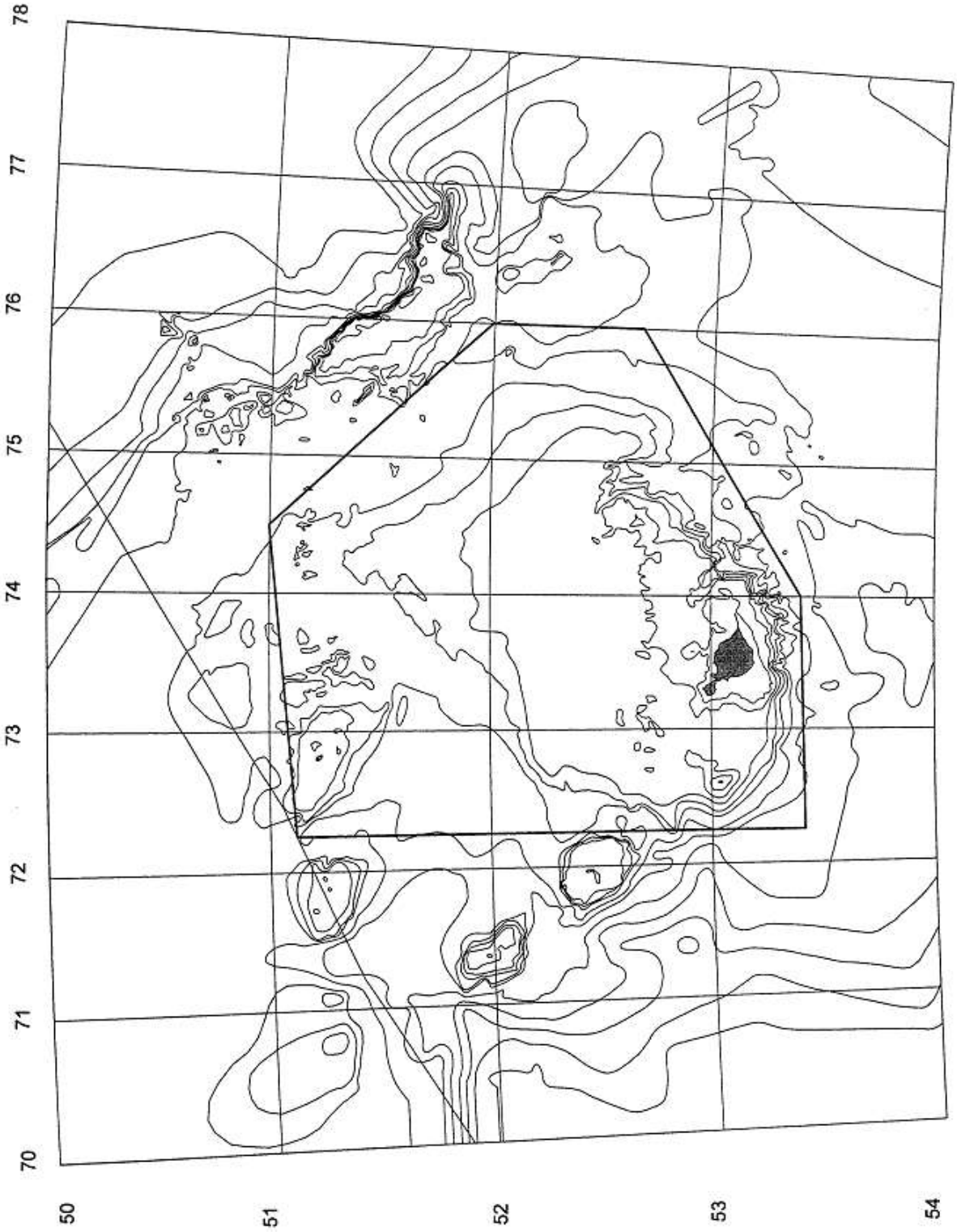
CONSERVATION MEASURE 42-02 (2014)
Limits on the fishery for *Champocephalus gunnari*
in Statistical Division 58.5.2 in the 2014/15 season

Species	icefish
Area	58.5.2
Season	2014/15
Gear	trawl

- Access
1. The fishery for *Champocephalus gunnari* in Statistical Division 58.5.2 shall be conducted by vessels using trawls only.
 2. For the purpose of this fishery for *Champocephalus gunnari*, the area open to the fishery is defined as that portion of Statistical Division 58.5.2 that lies within the area enclosed by a line:
 - (i) starting at the point where the meridian of longitude 72°15'E intersects the Australia–France Maritime Delimitation Agreement Boundary then south along the meridian to its intersection with the parallel of latitude 53°25'S;
 - (ii) then east along that parallel to its intersection with the meridian of longitude 74°E;
 - (iii) then northeasterly along the geodesic to the intersection of the parallel of latitude 52°40'S and the meridian of longitude 76°E;
 - (iv) then north along the meridian to its intersection with the parallel of latitude 52°S;
 - (v) then northwesterly along the geodesic to the intersection of the parallel of latitude 51°S with the meridian of longitude 74°30'E;
 - (vi) then southwesterly along the geodesic to the point of commencement.
 3. A chart illustrating the above definition is appended to this conservation measure (Annex 42-02/A). Areas in Statistical Division 58.5.2 outside that defined above shall be closed to directed fishing for *Champocephalus gunnari*.
- Catch limit
4. The total catch of *Champocephalus gunnari* in Statistical Division 58.5.2 in the 2014/15 season shall be limited to 309 tonnes.
 5. Where any haul contains more than 100 kg of *Champocephalus gunnari*, and more than 10% of *Champocephalus gunnari* by number are smaller than the specified minimum legal total length, the fishing vessel shall move to another fishing location at least 5 n miles distant¹. The fishing vessel shall not return to any point within 5 n miles of the location where the catch of small *Champocephalus gunnari* exceeded 10% for a period of at least five days². The location where the catch of small *Champocephalus gunnari* exceeded 10% is defined as the path followed by the fishing vessel from the point at which the fishing gear was first deployed from the fishing vessel to the point at which the fishing gear was retrieved by the fishing vessel. The minimum legal total length shall be 240 mm.

- Season 6. For the purpose of the trawl fishery for *Champocephalus gunnari* in Statistical Division 58.5.2, the 2014/15 season is defined as the period from 1 December 2014 to 30 November 2015, or until the catch limit is reached, whichever is sooner.
- By-catch 7. Fishing shall cease if the by-catch of any species reaches its by-catch limit as set out in Conservation Measure 33-02.
- Mitigation 8. The operation of this fishery shall be carried out in accordance with Conservation Measure 25-03 so as to minimise the incidental mortality of seabirds in the course of fishing.
- Observers 9. Each vessel participating in this fishery shall have at least one scientific observer, and may include one appointed in accordance with the CCAMLR Scheme of International Scientific Observation, on board throughout all fishing activities within the fishing period.
- Data: catch/effort 10. For the purpose of implementing this conservation measure in the 2014/15 season, the following shall apply:
- (i) the Ten-day Catch and Effort Reporting System set out in Annex 42-02/B;
 - (ii) the Monthly Fine-scale Catch and Effort Reporting System set out in Annex 42-02/B. Fine-scale data shall be submitted on a haul-by-haul basis.
11. For the purpose of Annex 42-02/B, the target species is *Champocephalus gunnari* and ‘by-catch species’ are defined as any species other than *Champocephalus gunnari*.
- Data: biological 12. Fine-scale biological data, as required under Annex 42-02/B, shall be collected and recorded. Such data shall be reported in accordance with the CCAMLR Scheme of International Scientific Observation.
- Environ- mental protection 13. Conservation Measure 26-01 applies.
- ¹ This provision concerning the minimum distance separating fishing locations is adopted pending the adoption of a more appropriate definition of a fishing location by the Commission.
- ² The specified period is adopted in accordance with the reporting period specified in Conservation Measure 23-01, pending the adoption of a more appropriate period by the Commission.

CHART OF THE HEARD ISLAND PLATEAU



DATA REPORTING SYSTEM

A ten-day catch and effort reporting system shall be implemented:

- (i) for the purpose of implementing this system, the calendar month shall be divided into three reporting periods, viz: day 1 to day 10, day 11 to day 20 and day 21 to the last day of the month. The reporting periods are hereafter referred to as periods A, B and C;
- (ii) at the end of each reporting period, each Contracting Party participating in the fishery shall obtain from each of its vessels information on total catch and total days and hours fished for that period and shall, by electronic transmission, transmit the aggregated catch and days and hours fished for its vessels so as to reach the Executive Secretary no later than the end of the next reporting period;
- (iii) a report must be submitted by every Contracting Party taking part in the fishery for each reporting period for the duration of the fishery, even if no catches are taken;
- (iv) the catch of *Champrocephalus gunnari* and of all by-catch species must be reported;
- (v) such reports shall specify the month and reporting period (A, B and C) to which each report refers;
- (vi) immediately after the deadline has passed for receipt of the reports for each period, the Executive Secretary shall notify all Contracting Parties engaged in fishing activities in the division of the total catch taken during the reporting period and the total aggregate catch for the season to date;
- (vii) at the end of every three reporting periods, the Executive Secretary shall inform all Contracting Parties of the total catch taken during the three most recent reporting periods and the total aggregate catch for the season to date.

A fine-scale catch, effort and biological data reporting system shall be implemented:

- (i) the scientific observer(s) on board each vessel shall collect the data required to complete the CCAMLR fine-scale catch and effort data form C1, latest version. These data shall be submitted to the CCAMLR Secretariat not later than one month after the vessel returns to port;
- (ii) the catch of *Champrocephalus gunnari* and of all by-catch species must be reported;
- (iii) the numbers of seabirds and marine mammals of each species caught and released or killed must be reported;

- (iv) the scientific observer(s) on board each vessel shall collect data on the length composition from representative samples of *Champscephalus gunnari* and by-catch species:
 - (a) length measurements shall be to the nearest centimetre below;
 - (b) representative samples of length composition shall be taken from each fine-scale grid rectangle (0.5° latitude by 1° longitude) fished in each calendar month;
- (v) the above data shall be submitted to the CCAMLR Secretariat not later than one month after the vessel returns to port.